

LENNON TELEPHONE COMPANY

Schedule of Description, Regulations,  
Terms and Conditions governing

Basic Local Exchange Service

Applying in the Exchanges of this  
Company in Michigan as designated in  
the Table of Contents herein.

---

Issued: May 24, 2016

Effective: May 31, 2016

Issued under the authority of PA179 of 1991, as amended.

Randy Fletcher, General Manager, 3095 S. Sheridan Road, Lennon, Michigan 48449-0329, (810) 621-3301,  
[rfletcher@lentel.com](mailto:rfletcher@lentel.com).

BASIC LOCAL EXCHANGE SERVICE TABLE OF  
CONTENTS

Title Page	Sheet 1
Table of Contents	Sheet 2
Checklist	Sheet 3
Subject Index	Sheet 4
Application and Arrangement of Tariff	Sheet 5
Index of Exchanges	Sheet 6
Basic Local Exchange Service	Sheet 7-7.1
Description of Lennon Exchange	Sheet 8
Lennon Exchange Area Map	Sheet 9
Descriptions of Gaines, New Lothrop and Swartz Creek Exchanges	Sheet 9.1
Description of Durand Area	Sheet 9.2
Durand Area Map	Sheet 9.3
Application of Boundary Designations	Sheet 10
Held for Future Use	Sheets 7.2-7.3, 12-12.2, 14-16.2
Lifeline Service	Sheet 13-13.3
Federal Programs	Sheet 13.4
Grandfathered Services	Sheet 17

---

Issued: May 24, 2016

Effective: May 31, 2016

Issued under the authority of PA179 of 1991, as amended.

Randy Fletcher, General Manager, 3095 S. Sheridan Road, Lennon, Michigan 48449-0329, (810) 621-3301,  
[rfletcher@lentel.com](mailto:rfletcher@lentel.com).

BASIC LOCAL EXCHANGE SERVICE

CHECKLIST

2nd Revised Sheet No. 1	Issued May 24, 2016
15 <sup>th</sup> Revised Sheet No. 2	Issued May 24, 2016
22nd Revised Sheet No. 3	Issued June 7, 2019*
9 <sup>th</sup> Revised Sheet No. 4	Issued May 24, 2016
2nd Revised Sheet No. 5	Issued May 24, 2016
4th Revised Sheet No. 6	Issued May 24, 2016
11th Revised Sheet No. 7	Issued May 24, 2016
4th Revised Sheet No. 7.1	Issued May 24, 2016
3rd Revised Sheet No. 7.2	Issued May 24, 2016
2 <sup>nd</sup> Revised Sheet No. 7.3	Issued May 24, 2016
3rd Revised Sheet No. 8	Issued May 24, 2016
3rd Revised Sheet No. 9	Issued May 24, 2016
3rd Revised Sheet No. 9.1	Issued May 24, 2016
1 <sup>st</sup> Revised Sheet No. 9.2	Issued May 24, 2016
1 <sup>st</sup> Revised Sheet No. 9.3	Issued May 24, 2016
1 <sup>st</sup> Revised Sheet No. 10	Issued May 24, 2016
2nd Revised Sheet No. 11	Issued May 24, 2016
2 <sup>nd</sup> Revised Sheet No. 11.1	Issued May 24, 2016
2 <sup>nd</sup> Revised Sheet No. 11.2	Issued May 24, 2016
2 <sup>nd</sup> Revised Sheet No. 11.3	Issued May 24, 2016
2 <sup>nd</sup> Revised Sheet No. 12	Issued May 24, 2016
2 <sup>nd</sup> Revised Sheet No. 12.1	Issued May 24, 2016
2 <sup>nd</sup> Revised Sheet No. 12.2	Issued May 24, 2016
6th Revised Sheet No. 13	Issued June 7, 2019*
9 <sup>th</sup> Revised Sheet No. 13.1	Issued June 7, 2019*
6th Revised Sheet No. 13.2	Issued June 7, 2019*
2 <sup>nd</sup> Revised Sheet No. 13.3	Issued May 24, 2016
Original Sheet No. 13.4	Issued December 22, 1999
2 <sup>nd</sup> Revised Sheet No. 14	Issued May 24, 2016
2 <sup>nd</sup> Revised Sheet No. 15	Issued May 24, 2016
2 <sup>nd</sup> Revised Sheet No. 15.1	Issued May 24, 2016
3rd Revised Sheet No. 16	Issued May 24, 2016
3rd Revised Sheet No. 16.1	Issued May 24, 2016
2 <sup>nd</sup> Revised Sheet No. 16.2	Issued May 24, 2016
Original Sheet No. 17	Issued June 6, 2000

\*Pages changed by this filing

---

Issued: June 7, 2019

Effective: June 11, 2019

Issued under the authority of PA179 of 1991, as amended.

Randy Fletcher, General Manager, 3095 S. Sheridan Road, Lennon, Michigan 48449-0329, (810) 621-3301,  
[rfletcher@lentel.com](mailto:rfletcher@lentel.com).

BASIC LOCAL EXCHANGE SERVICE SUBJECT INDEX

Application and Arrangement of Tariff.....5  
Application of Boundary Designations ..... 10  
Primary Basic Local Exchange Service..... 7-7.1  
Checklist..... 3  
Descriptions of Gaines, New Lothrop and Swartz Creek Exchanges . . . . . 9.1  
Description of Durand Area . . . . . 9.2  
Description of Lennon Exchange ..... 8  
Durand Area Map . . . . . 9.3  
Grandfathered Services ..... 17  
Held for Future Use . . . . . 7.2-7.3, 12-12.2, 14-16.2  
Index of Exchanges .....6  
Lennon Exchange Area Map..... 9  
Lifeline Service..... 13-13.3  
Service Charges .....11-11.3  
Subject Index .....4  
Table of Contents.....2  
Title Page.....1

---

Issued: May 24, 2016

Effective: May 31, 2016

Issued under the authority of PA179 of 1991, as amended.

Randy Fletcher, General Manager, 3095 S. Sheridan Road, Lennon, Michigan 48449-0329, (810) 621-3301,  
[rfletcher@lentel.com](mailto:rfletcher@lentel.com).

BASIC LOCAL EXCHANGE SERVICE

APPLICATION AND ARRANGEMENT OF TARIFF

APPLICATION

1. This Tariff applies to the Basic Local Exchange Service of Lennon Telephone Company - hereinafter referred to as the Telephone Company or the Company - in exchanges in Michigan as designated herein.
2. Basic Local Exchange Service is that of furnishing facilities for telephone intercommunication between customers within a Local Service Area.
3. The provision of service is subject to regulations specified in the M.P.S.C. Tariffs of the Telephone Company, which tariffs as they now exist or as they may be revised, added to, or supplemented by superseding issues are hereby made a part of this Tariff.

EXPLANATION OF SYMBOLS

- (C) Signifies a changed regulation.
- (D) Signifies a discontinued rate, treatment or regulation.
- (I) Signifies an increased rate, or new treatment resulting in increased rate.
- (N) Signifies a new rate, treatment or regulation.
- (R) Signifies a reduced rate, or new treatment resulting in a reduced rate.
- (M) Signifies a moved rate, treatment or regulation.

---

Issued: May 24, 2016

Effective: May 31, 2016

Issued under the authority of PA179 of 1991, as amended.

Randy Fletcher, General Manager, 3095 S. Sheridan Road, Lennon, Michigan 48449-0329, (810) 621-3301,  
[rfletcher@lentel.com](mailto:rfletcher@lentel.com).

BASIC LOCAL EXCHANGE SERVICE

INDEX OF EXCHANGES SHOWING INCORPORATED  
 VILLAGES, TOWNSHIPS AND COUNTIES WITHIN  
 EXCHANGE SERVICE AREAS

<u>Exchange</u>	<u>Cities and Incorporated Villages</u>	<u>Townships</u>	<u>County</u>
Durand*	City of Durand Village of Vernon	Durand Vernon Burns Shiawassee Venice Vernon	Shiawassee
Gaines	Village of Gaines	Argentine Gaines	Genesee
Lennon	Village of Lennon	Clayton Gaines Venice Vernon	Genesee/ Shiawassee
Swartz Creek	City of Swartz Creek	Clayton Flint Gaines Mundy	Genesee
New Lothrop	Village of New Lothrop	Hazelton	Shiawassee

\* At present, the Company only serves the geographic portion of the Durand exchange as described in Sheet Nos. 9.2 and 9.3 as the "Durand Area."

Issued: May 24, 2016

Effective: May 31, 2016

Issued under the authority of PA179 of 1991, as amended.

BASIC LOCAL EXCHANGE SERVICE

DESCRIPTION OF SERVICE

A. General

Exchange: Lennon  
Durand Area

1. The provision of service at the rates shown below is subject to the regulations given in the General Rules and Regulations as they now exist and are filed with and form part of this Tariff.
2. The rates shown below entitle the customer to messages without other charge to all stations bearing the designation of a central office at the following exchanges, which comprise the Local Calling Area.

DURAND	FLUSHING	LENNON	OWOSSO
FLINT	GAINES	NEW LOTHROP	SWARTZ CREEK

Messages to the above exchanges will be treated as being within the Local Calling Area, and a customer will receive no other charge, if the provider terminating the call has made interconnection arrangements with Lennon Telephone Company.

---

Issued: May 24, 2016

Effective: May 31, 2016

Issued under the authority of PA179 of 1991, as amended.

Randy Fletcher, General Manager, 3095 S. Sheridan Road, Lennon, Michigan 48449-0329, (810) 621-3301,  
[rfletcher@lentel.com](mailto:rfletcher@lentel.com).

BASIC LOCAL EXCHANGE SERVICE

DESCRIPTION OF SERVICE

---

Issued: May 24, 2016

Effective: May 31, 2016

Issued under the authority of PA179 of 1991, as amended.

Randy Fletcher, General Manager, 3095 S. Sheridan Road, Lennon, Michigan 48449-0329, (810) 621-3301,  
[rfletcher@lentel.com](mailto:rfletcher@lentel.com).



HELD FOR FUTURE USE

---

Issued: May 24, 2016

Effective: May 31, 2016

Issued under the authority of PA179 of 1991, as amended.

Randy Fletcher, General Manager, 3095 S. Sheridan Road, Lennon, Michigan 48449-0329, (810) 621-3301, [rfletcher@lentel.com](mailto:rfletcher@lentel.com).

HELD FOR FUTURE USE

---

Issued: May 24, 2016

Effective: May 31, 2016

Issued under the authority of PA179 of 1991, as amended.

Randy Fletcher, General Manager, 3095 S. Sheridan Road, Lennon, Michigan 48449-0329, (810) 621-3301, [rfletcher@lentel.com](mailto:rfletcher@lentel.com).

BASIC LOCAL TELEPHONE EXCHANGE SERVICE

DESCRIPTION OF LENNON EXCHANGE AREA

EXCHANGE SERVICE AREA - Which is that area described as follows:

Beginning at the NE corner Section 13, T7N, R4E, Venice Township, Shiawassee County; thence north to the northeast corner Section 1; thence west to Shipman Road; thence southwesterly along Shipman Road to the north 1/8 line, Section 3; thence west to the west line Section 4; thence south to the northwest corner of Section 9; thence south southeast to the southeast corner Section 16; thence south to the southwest corner of Section 27; thence east to the northwest corner Section 35; thence south to a point along a line 1/10 mile north of Goodall Road; thence east to a point 4/10 mile east of the west line Section 1; thence south to a point 1/10 mile south of Goodall Road; thence east to a point 1/10 mile west of Riniel Road; thence north to the Center Line of Goodall Road; thence east remaining on said Center Line to the Center Line of County Line Road; thence south remaining on the Center Line of County Line Road to the Center Line of Lansing Highway; thence southwest along the Center Line of Lansing Highway, to a point where said Center Line is at a right angle to County Line Road and also 1/10 mile from said road; thence south to the Center Line of Bennington Road; thence east remaining on the Center Line of Bennington Road to the Center Line of County Line Road; thence south remaining on the Center Line of County Line Road to the west 1/4 Post of Section 7, Gaines Township, Genesee County; thence east 1/10 mile; thence south to the South Line of Section 7; thence east to the South 1/4 Post of Section 7; thence north to the center of Section 7; thence east to a point 1/10 mile east of the west 1/4 Post of Section 8; thence north to a point 1/10 mile north of the south line of Section 5; thence east to the north-south 1/4 line of Section 5; thence north to the center of Section 32, Clayton Township; thence east to the center of Section 33; thence north to a point 1/10 mile north of the south line of Section 28; thence east to the north-south 1/8 line of the southeast 1/4 of Section 28; thence north to the east-west 1/4 line of Section 28; thence east to a point 1/10 mile west of the east line of Section 28; thence north to a point 250 feet south of Lennon Road; thence east to a point 1,000 feet east of Van Vleet Road; thence north to a point 350 feet north of Lennon Road; thence west to a point 2/10 west of Van Vleet Road; thence north to a point 1/10 mile north of the south line of Section 16; thence west to the north-south 1/4 line of section 16, thence north to the north line Section 16; thence west to the Genesee-Shiawassee County Line to the point of beginning.

---

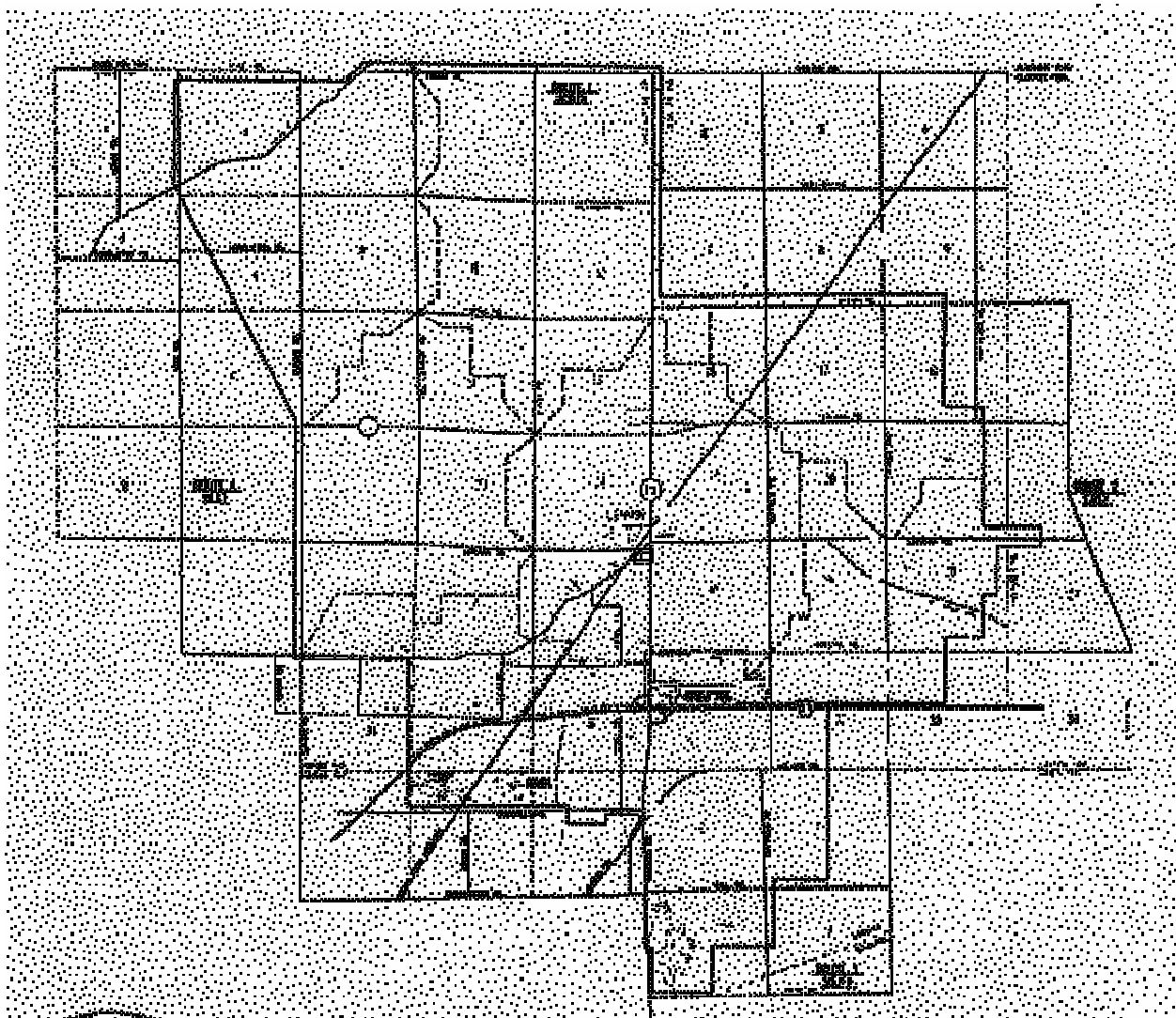
Issued: May 24, 2016

Effective: May 31, 2016

Issued under the authority of PA179 of 1991, as amended.

Randy Fletcher, General Manager, 3095 S. Sheridan Road, Lennon, Michigan 48449-0329, (810) 621-3301, [rfletcher@lentel.com](mailto:rfletcher@lentel.com).

BASIC LOCAL TELEPHONE  
EXCHANGE SERVICE LENNON  
EXCHANGE AREA MAP



---

Issued: May 24, 2016

Effective: May 31, 2016

Issued under the authority of PA179 of 1991, as amended.

Randy Fletcher, General Manager, 3095 S. Sheridan Road, Lennon, Michigan 48449-0329, (810) 621-3301, [rfletcher@lentel.com](mailto:rfletcher@lentel.com).

BASIC LOCAL EXCHANGE SERVICE  
DESCRIPTIONS OF OTHER EXCHANGE AREAS

Exchange:

Gaines  
New Lothrop  
Swartz Creek

The Telephone Company hereby mirrors the Map and Legal Description tariffs of the exchanges, by company, listed below to identify its service territory. Any future modifications to these exchange boundaries or legal descriptions of these boundaries will be automatically mirrored by the Telephone Company on a going forward basis. If not mirrored, new detailed maps and legal descriptions on an individual exchange basis will be filed with the Michigan Public Service Commission for approval.

Gaines Exchange of Frontier North  
New Lothrop Exchange of CenturyTel Midwest-Michigan  
Swartz Creek Exchange of Frontier North

---

Issued: May 24, 2016

Effective: May 31, 2016

Issued under the authority of PA179 of 1991, as amended.

Randy Fletcher, General Manager, 3095 S. Sheridan Road, Lennon, Michigan 48449-0329, (810) 621-3301, [rfletcher@lentel.com](mailto:rfletcher@lentel.com).

BASIC LOCAL EXCHANGE SERVICE  
DESCRIPTION OF DURAND AREA

The Durand Area is comprised of the following geographic area:

Beginning at the corner of County Line Road and Pittsburg Road, West on Pittsburg Road to Vernon Road; North on Vernon Road to Garrison Road; West on Garrison Road to the Vernon Township line; North along the Vernon Township Line to Goodall Road; East on Goodall Road to Reed Road; North on Reed Road to Lennon Road; East along Lennon Road to the Western boundary of the Lennon exchange; then generally South and East along the existing boundary line of the Lennon exchange (as defined in Sheet No. 8) and continuing generally South and East along the existing boundary line of the Gaines exchange (as defined in tariffs of Verizon North, Inc.) and returning to the beginning point at the corner of County Line Road and Pittsburg Road.

---

Issued: May 24, 2016

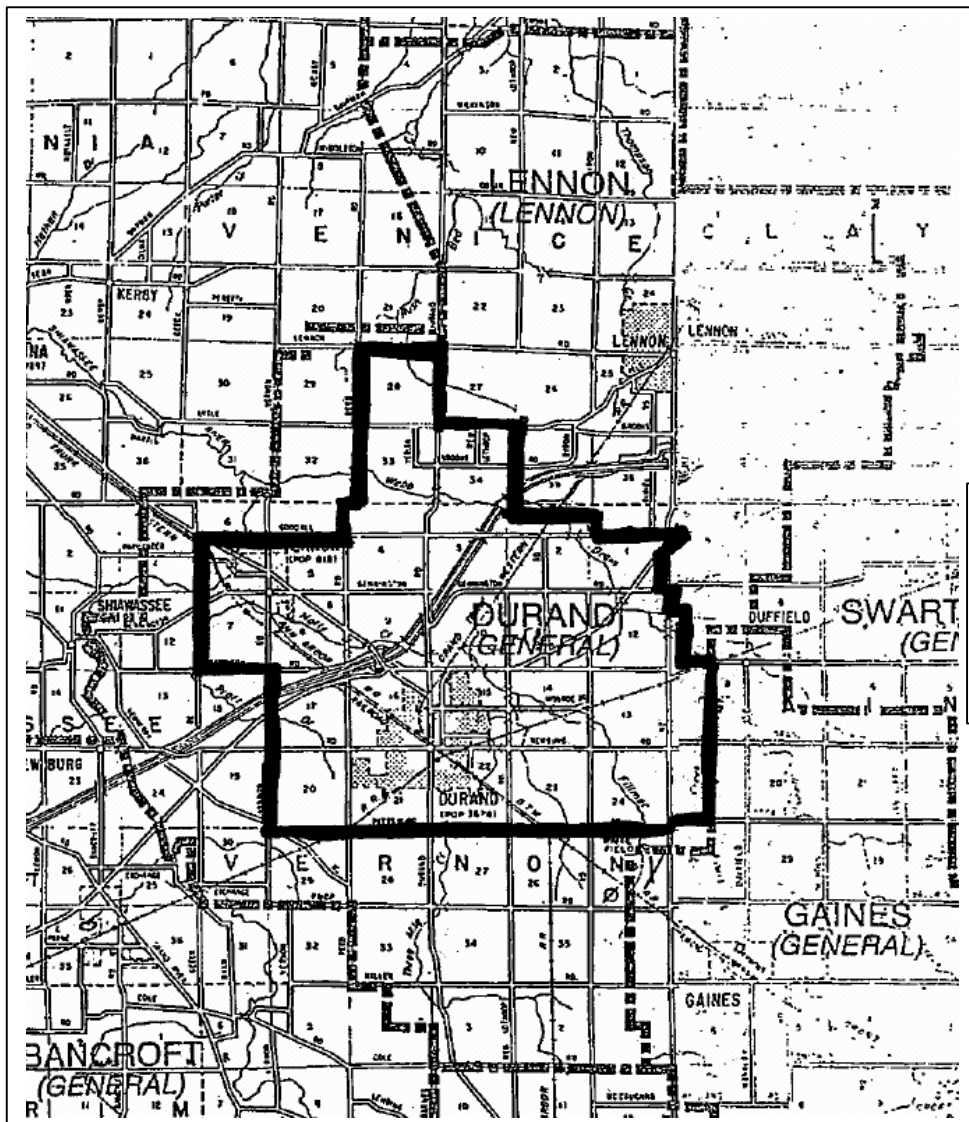
Effective: May 31, 2016

Issued under the authority of PA179 of 1991, as amended.

Randy Fletcher, General Manager, 3095 S. Sheridan Road, Lennon, Michigan 48449-0329, (810) 621-3301, [rfletcher@lentel.com](mailto:rfletcher@lentel.com).

BASIC LOCAL EXCHANGE SERVICE

DURAND AREA MAP



Issued: May 24, 2016

Effective: May 31, 2016

Issued under the authority of PA179 of 1991, as amended.

Randy Fletcher, General Manager, 3095 S. Sheridan Road, Lennon, Michigan 48449-0329, (810) 621-3301,  
[rfletcher@lentel.com](mailto:rfletcher@lentel.com).

BASIC LOCAL TELEPHONE EXCHANGE SERVICE

APPLICATION OF BOUNDARY DESIGNATIONS

A. GENERAL

1. Application of Boundary Designations

- a. Boundaries for Locality Rate Areas and the service areas for Exchanges are designated on maps in Tariff M.P.S.C. No. 1R.
- b. Each establishment is within only one Exchange area except as provided in c. below.
- c. Where the boundary is designated as a road (street or highway) the area includes that side of the highway on which are located the general plant facilities serving both sides of the highway. When such facilities are located on the near side of the highway, a customer located on the opposite side is considered to be within the area if he can be served by a drop wire using not more than one additional pole; when the general facilities are located on the far side of the boundary, a customer on that side is considered to be within the area if he can be served by means of a drop wire not requiring any additional poles.
- d. Where the boundary is designated as the center of the road (street or highway), each side of the road is in a different service area.
- e. Where the boundary is designated as a river (stream) or, railroad, each side of the river or railroad is in a different service area.
- f. Where the boundary divides a lake, the shore of the lake is in 5 different service areas in accordance with the boundary designation at the shore line.
- g. Where the boundary is designated as a Township section Line or a specified distance from a Township Section Line, customers are served in accordance with their location with respect to such boundary line.  
When such a line is other than the section line or one-quarter or one-half mile from a section line, the location of the boundary line with respect to the section line will be shown in feet or fractional miles on the Exchange Area Map Sheet.

---

Issued: May 24, 2016

Effective: May 31, 2016

Issued under the authority of PA179 of 1991, as amended.

Randy Fletcher, General Manager, 3095 S. Sheridan Road, Lennon, Michigan 48449-0329, (810) 621-3301,  
[rfletcher@lentel.com](mailto:rfletcher@lentel.com).



BASIC LOCAL EXCHANGE SERVICE  
SERVICE CHARGES

---

Issued: May 24, 2016

Effective: May 31, 2016

Issued under the authority of PA179 of 1991, as amended.

Randy Fletcher, General Manager, 3095 S. Sheridan Road, Lennon, Michigan 48449-0329, (810) 621-3301,  
[rfletcher@lentel.com](mailto:rfletcher@lentel.com).

BASIC LOCAL EXCHANGE SERVICE  
SERVICE CHARGES

---

Issued: May 24, 2016

Effective: May 31, 2016

Issued under the authority of PA179 of 1991, as amended.

Randy Fletcher, General Manager, 3095 S. Sheridan Road, Lennon, Michigan 48449-0329, (810) 621-3301,  
[rfletcher@lentel.com](mailto:rfletcher@lentel.com).

BASIC LOCAL EXCHANGE SERVICE  
SERVICE CHARGES

---

Issued: May 24, 2016

Effective: May 31, 2016

Issued under the authority of PA179 of 1991, as amended.

Randy Fletcher, General Manager, 3095 S. Sheridan Road, Lennon, Michigan 48449-0329, (810) 621-3301,  
[rfletcher@lentel.com](mailto:rfletcher@lentel.com).

BASIC LOCAL EXCHANGE SERVICE  
SERVICE CHARGES

---

Issued: May 24, 2016

Effective: May 31, 2016

Issued under the authority of PA179 of 1991, as amended.

Randy Fletcher, General Manager, 3095 S. Sheridan Road, Lennon, Michigan 48449-0329, (810) 621-3301,  
[rfletcher@lentel.com](mailto:rfletcher@lentel.com).

Lennon Telephone Company  
M.P.S.C. No. 1R

2nd Revised Sheet No. 12  
Cancels 1<sup>st</sup> Revised Sheet No. 12

BASIC LOCAL TELEPHONE EXCHANGE SERVICE  
HELD FOR FUTURE USE

---

Issued: May 24, 2016

Effective: May 31, 2016

Issued under the authority of PA179 of 1991, as amended.

Randy Fletcher, General Manager, 3095 S. Sheridan Road, Lennon, Michigan 48449-0329, (810) 621-3301,  
[rfletcher@lentel.com](mailto:rfletcher@lentel.com).

Lennon Telephone Company  
M.P.S.C. No. 1R

2nd Revised Sheet No. 12.1  
Cancels 1<sup>st</sup> Revised Sheet No. 12.1

BASIC LOCAL TELEPHONE EXCHANGE SERVICE

HELD FOR FUTURE USE

---

Issued: May 24, 2016

Effective: May 31, 2016

Issued under the authority of PA179 of 1991, as amended.

Randy Fletcher, General Manager, 3095 S. Sheridan Road, Lennon, Michigan 48449-0329, (810) 621-3301,  
[rfletcher@lentel.com](mailto:rfletcher@lentel.com).

Lennon Telephone Company  
M.P.S.C. No. 1R

2nd Revised Sheet No. 12.2  
Cancels 1<sup>st</sup> Revised Sheet No. 12.2

BASIC LOCAL TELEPHONE EXCHANGE SERVICE

HELD FOR FUTURE USE

---

Issued: May 24, 2016

Effective: May 31, 2016

Issued under the authority of PA179 of 1991, as amended.

Randy Fletcher, General Manager, 3095 S. Sheridan Road, Lennon, Michigan 48449-0329, (810) 621-3301,  
[rfletcher@lentel.com](mailto:rfletcher@lentel.com).

LOCAL TELEPHONE EXCHANGE SERVICE  
LIFELINE SERVICE

A. DESCRIPTION

The descriptions, Lifeline program eligibility requirements, discounts and regulations under the State and Federal Lifeline Programs for low income consumers are set forth in Telecommunications Association of Michigan Tariff M.P.S.C. No. 9R in which the Company is a concurring carrier.

(C)

(D)

(D)



LOCAL TELEPHONE EXCHANGE SERVICE  
LIFELINE SERVICE

B. REGULATIONS

(D)

(D)

LOCAL TELEPHONE EXCHANGE SERVICE  
LIFELINE SERVICE

C. MONTHLY RATES AND DISCOUNTS FOR LIFELINE CUSTOMERS

(D)

D. MONTHLY RATE FOR NON LIFELINE CUSTOMERS

(D)

(D)

(D)

BASIC LOCAL TELEPHONE EXCHANGE SERVICE

LIFELINE SERVICE

---

Issued: May 24, 2016

Effective: May 31, 2016

Issued under the authority of PA179 of 1991, as amended.

Randy Fletcher, General Manager, 3095 S. Sheridan Road, Lennon, Michigan 48449-0329, (810) 621-3301,  
[rfletcher@lentel.com](mailto:rfletcher@lentel.com).

FEDERAL PROGRAMS

1 UNIVERSAL SERVICE SUPPORT FOR LIBRARIES AND SCHOOLS

- 1 . In accordance with 1997 PA 95 of the Michigan Telecommunications Act, and 47 CFR 54.500 *et. seq.*, eligible elementary and secondary schools shall receive intrastate services at discounts equal to the discounts applicable for eligible interstate services if the Company receives federal universal support for such telecommunication services.
2. In accordance with 1997 PA 96 of the Michigan Telecommunications Act, and 47 CFR 54.500 *et seq.*, eligible libraries shall receive intrastate services at discounts equal to the discounts applicable for eligible interstate services if the Company receives federal universal support for such telecommunication services.
3. Eligibility for discounts shall be determined in accordance with 47 CFR 54.500 *et seq.*

2. UNIVERSAL SERVICE SUPPORT FOR HEALTH CARE PROVIDERS

- 1 . In accordance with 47 CPR 54.601 *et. seq.*, the Company shall offer services to eligible health care providers to the extent that facilities and services are available.
2. Eligibility qualifications, provider selection, etc. shall be determined in accordance with 47 CFR 54.601 *et. seq.*
3. Services to eligible health care providers at reduced rates will be offered in accordance with 47 CFR 54.601 *et. seq.*
4. Reduced rates to eligible health care providers are available only to the extent that adequate funding is available from the federal universal support fund.

Issued: December 22, 1999  
By: Paul Bowman, Manager

Effective: December 26, 1999  
Lennon, Michigan

Issued under authority of 1991 PA 179 as amended.

Reserved for future use.

---

Issued: May 24, 2016

Effective: May 31, 2016

Issued under the authority of PA179 of 1991, as amended.

Randy Fletcher, General Manager, 3095 S. Sheridan Road, Lennon, Michigan 48449-0329, (810) 621-3301,  
[rfletcher@lentel.com](mailto:rfletcher@lentel.com).

Lennon Telephone Company  
MPSC No. 1R

2nd Revised Sheet No. 15  
Cancels 1<sup>st</sup> Revised Sheet No. 15

Reserved for future use.

---

Issued: May 24, 2016

Effective: May 31, 2016

Issued under the authority of PA179 of 1991, as amended.

Randy Fletcher, General Manager, 3095 S. Sheridan Road, Lennon, Michigan 48449-0329, (810) 621-3301,  
[rfletcher@lentel.com](mailto:rfletcher@lentel.com).

Lennon Telephone Company  
MPSC No. 1R

2nd Revised Sheet No. 15.1  
Cancels 1<sup>st</sup> Revised Sheet No. 15.1

Reserved for future use.

---

Issued: May 24, 2016

Effective: May 31, 2016

Issued under the authority of PA179 of 1991, as amended.

Randy Fletcher, General Manager, 3095 S. Sheridan Road, Lennon, Michigan 48449-0329, (810) 621-3301,  
[rfletcher@lentel.com](mailto:rfletcher@lentel.com).

Reserved for future use.

---

Issued: May 24, 2016

Effective: May 31, 2016

Issued under the authority of PA179 of 1991, as amended.

Randy Fletcher, General Manager, 3095 S. Sheridan Road, Lennon, Michigan 48449-0329, (810) 621-3301,  
[rfletcher@lentel.com](mailto:rfletcher@lentel.com).



Reserved for future use.

---

Issued: May 24, 2016

Effective: May 31, 2016

Issued under the authority of PA179 of 1991, as amended.

Randy Fletcher, General Manager, 3095 S. Sheridan Road, Lennon, Michigan 48449-0329, (810) 621-3301,  
[rfletcher@lentel.com](mailto:rfletcher@lentel.com).

Lennon Telephone Company  
MPSC No. 1R

2nd Revised Sheet No. 16.2  
Cancels 1<sup>st</sup> Revised Sheet No. 16.2

Reserved for future use.

---

Issued: May 24, 2016

Effective: May 31, 2016

Issued under the authority of PA179 of 1991, as amended.

Randy Fletcher, General Manager, 3095 S. Sheridan Road, Lennon, Michigan 48449-0329, (810) 621-3301,  
[rfletcher@lentel.com](mailto:rfletcher@lentel.com).

GRANDFATHERED SERVICES

A. "Grandfathering" of Existing Service offerings No Longer Offered for New Installations

General

The following service offerings have been discontinued to new customers but continue for specific customers who were subscribing to them at the time of their discontinuance. These exceptions to regular , Tariff provisions are referred to as the "grandfathering" of the customers involved. The service offerings continued on this basis are identified below and are subject to the conditions specified in paragraph 2 below.

2. Service offerings and Rate Treatments

Grandfathered service offerings are continued only for existing customers at existing locations. The rates for grandfathered services are subject to change in the same manner and to the same extent as regular service offerings. No new or additional "grandfathered" services will be furnished. Where a new customer takes over existing telephone service, with or without a change in directory listing, where the customer initiates a change in class of service or where there is a break in the continuity, the "grandfathered" service is no longer available. The renting or leasing of the premises on which the service is provided to someone other than the existing customer voids the furnishing of the grandfathered service, whether or not the telephone service remains in the name of the original customer.

B. GRANDFATHERED SERVICES

Customers located in the northeastern portion of the Durand Exchange and customers located in the southern portion of the New Lothrop Exchange, receiving local service as a part of the U-11433 Lennon Exchange on or before June 5, 2000, shall continue to receive service and be charged for such services as part of the Lennon Exchange.

Issued: June 6, 2000  
By: Paul Bowman, Manager

Effective: June 6, 2000  
Lennon, Michigan

Issued under the authority of the Michigan Public Service Commission order, dated June 5, 1999, in Case No. U-1227S.